



ACC DAR Adapting to Climate Change in Coastal Dar es Salaam

Mainstreaming Climate Change Adaptation into Urban Development and Environmental Management Plans and Programs

WATER RESOURCES MONITORING IN DAR ES SALAAM AND COAST SUB BASIN

10 June 2014



SAPIENZA
UNIVERSITÀ DI ROMA



Rosemary J. Masikini

Hydrologist – Wami/Ruvu Basin Water Board

rmasikini@gmail.com/r.masikini@yahoo.com

Presentation layout

Introduction

WRM activities in Wami/Ruvu Basin

WR Monitoring Network

Groundwater Status



Introduction

***WATER POLICY* 2002:** Water resources Management Framework in which five levels of water resources management were identified, which includes;

National Water Board; policy orientation and development as well as water resources management objectives and information management systems are determined. Also the boundaries of the Basins and sub-catchments are defined

Basin Water Board; approving Basin plans and budgets, approving water use permits, conflict resolution, and being an operational (water resources assessment, pollution control etc) and planning unit for water resources

Catchment committee; coordinating catchment and inter-district plans.

District; assisting communities in planning, development and management or their rural water supply schemes, formulating by laws for protection of water sources

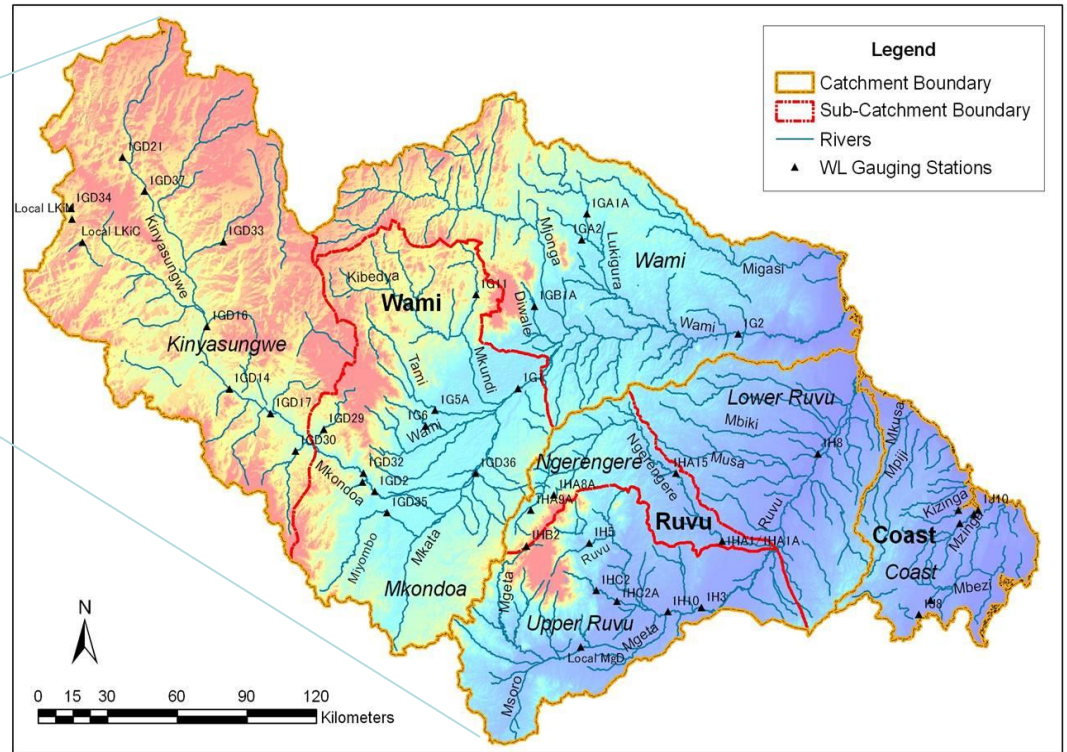
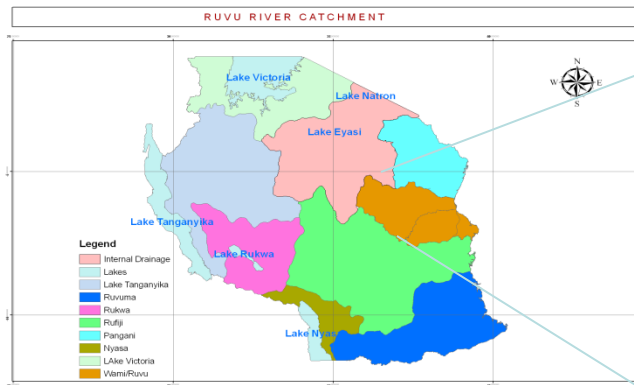
Water User Associations (WUAs); is the lowest level of the water resources management

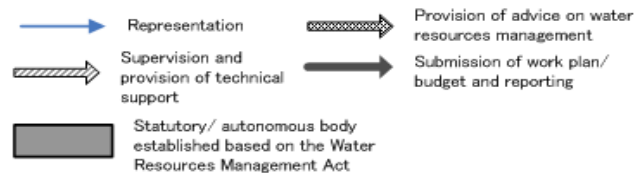
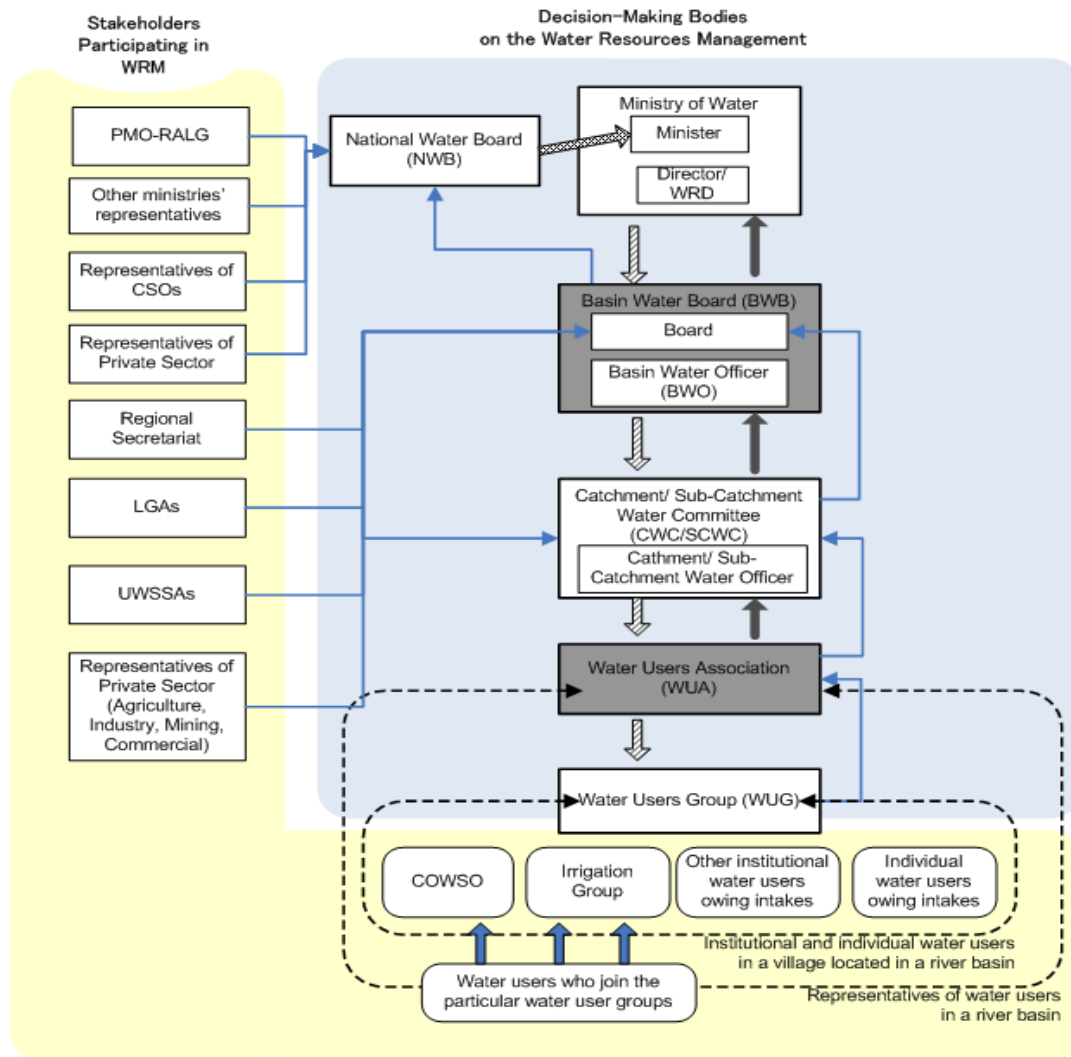


Introduction...

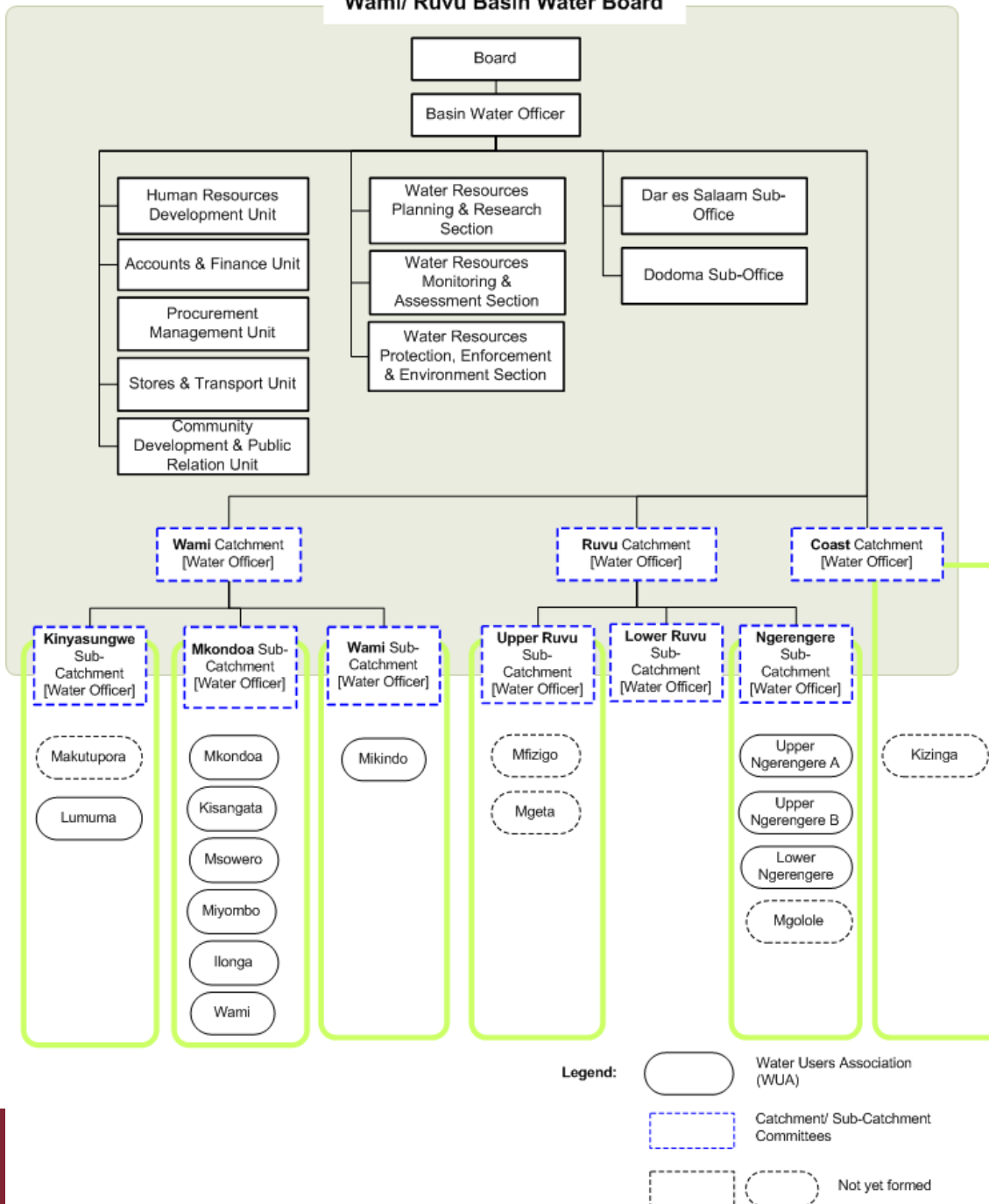
- ❖ Established: July 2002. Head quarters-Moro,
- ❖ Sub offices Dar es Salaam and Dodoma,
- ❖ Area: km² 66,820, (Wami-43,946 , Ruvu-18,078, Coastal rivers-4,796).
- ❖ Located between: Lat. 4° 54' 29" to 7° 38' 10" South, long. 35° 38' 22" to 39° 16' 22" West
- ❖ Regions 6, Districts 22.
- ❖ Importance: The Basin is supplying water for different uses: Domestic, Commercial, Industrial, Irrigation, Livestock, fishing, National Parks: (Saadani and Mikumi) and Selou, Eastern Arck Mountains with different Biodiversity, Big and commercial cities-DSM and Dodoma.

Introduction ...





Wami/ Ruvu Basin Water Board



Basin Responsibilities

The Basin operates under annual work plan, which is derived from the Five Years Business Plan (2009/2010 – 2013/2014). The main activities considers the Basin Obligations, which are in agreement between the Ministry of Water and Basin Water Boards. The following are main responsibilities;



Responsibilities.....

1. To issue water use and discharge permit



Responsibilities.....

2. To monitor and regulate water use according to natural availability.
3. To control and take legal measures against water resource polluters
4. Operation and maintainance of water resource monitoring stations and asses quantity and quality of water.
5. To coordinate the Integrated Water Resources Management and Development (IWRM&D) plans

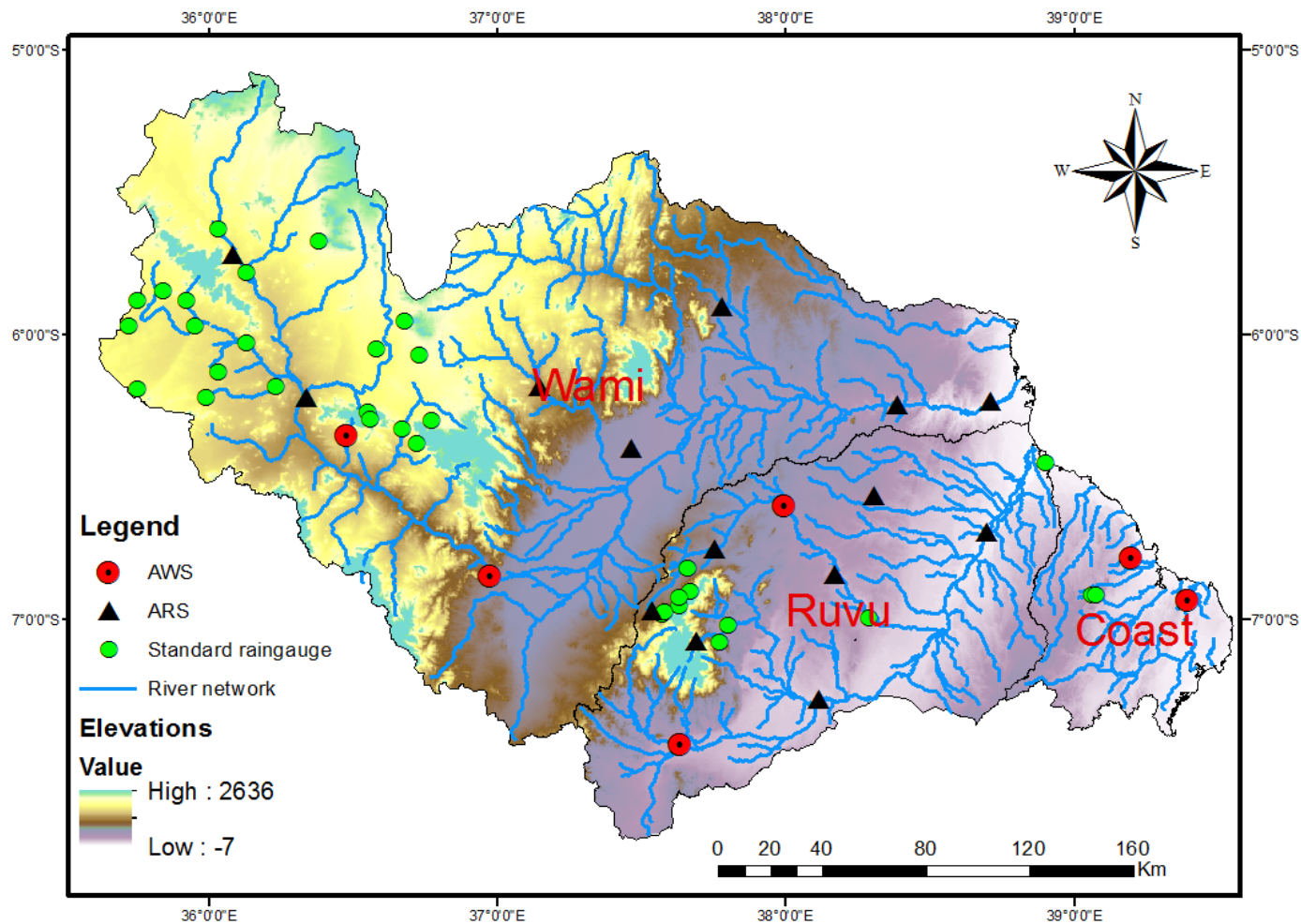


Responsibilities.....

6. To resolve water use conflicts
7. To collect different water user fees and use them for office operation
8. To sensitize stakeholders on the sustainable use of water resources
9. To facilitate formation of Water User Associations (WUAs)
10. To facilitate the formation of catchment and sub catchment committees



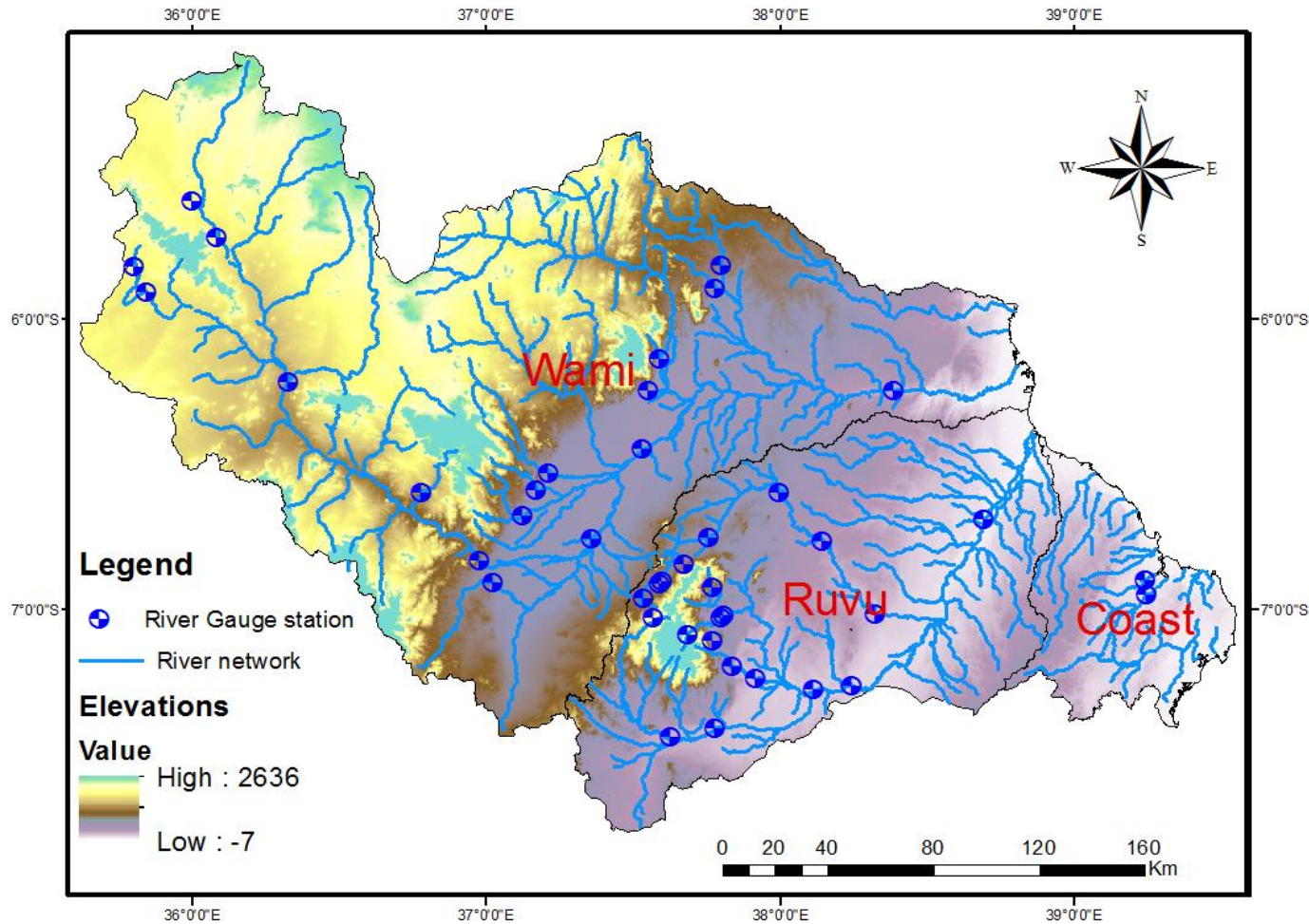
WR Monitoring network



56 Climatic stations

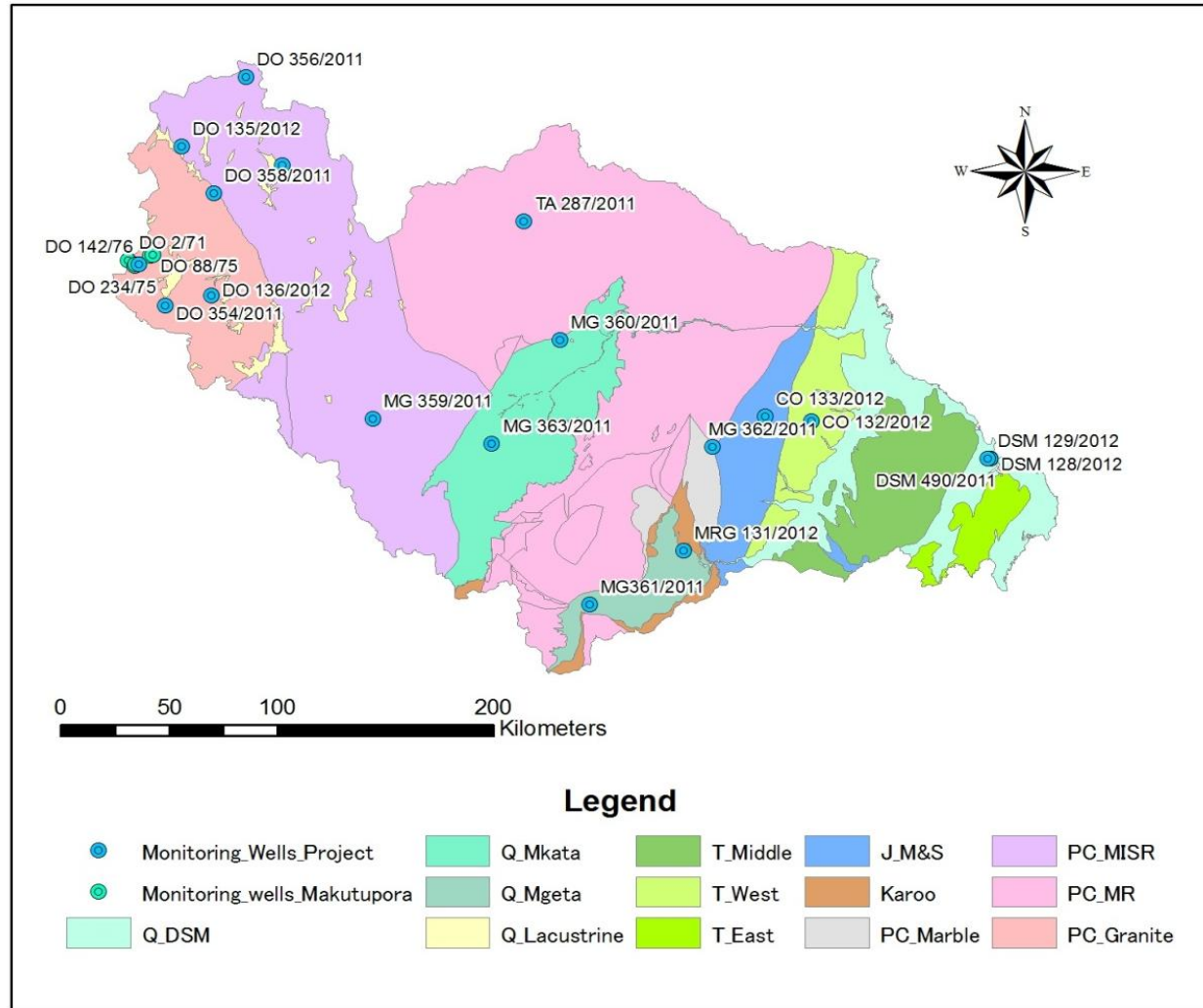


WR Monitoring network.....



43 water level stations

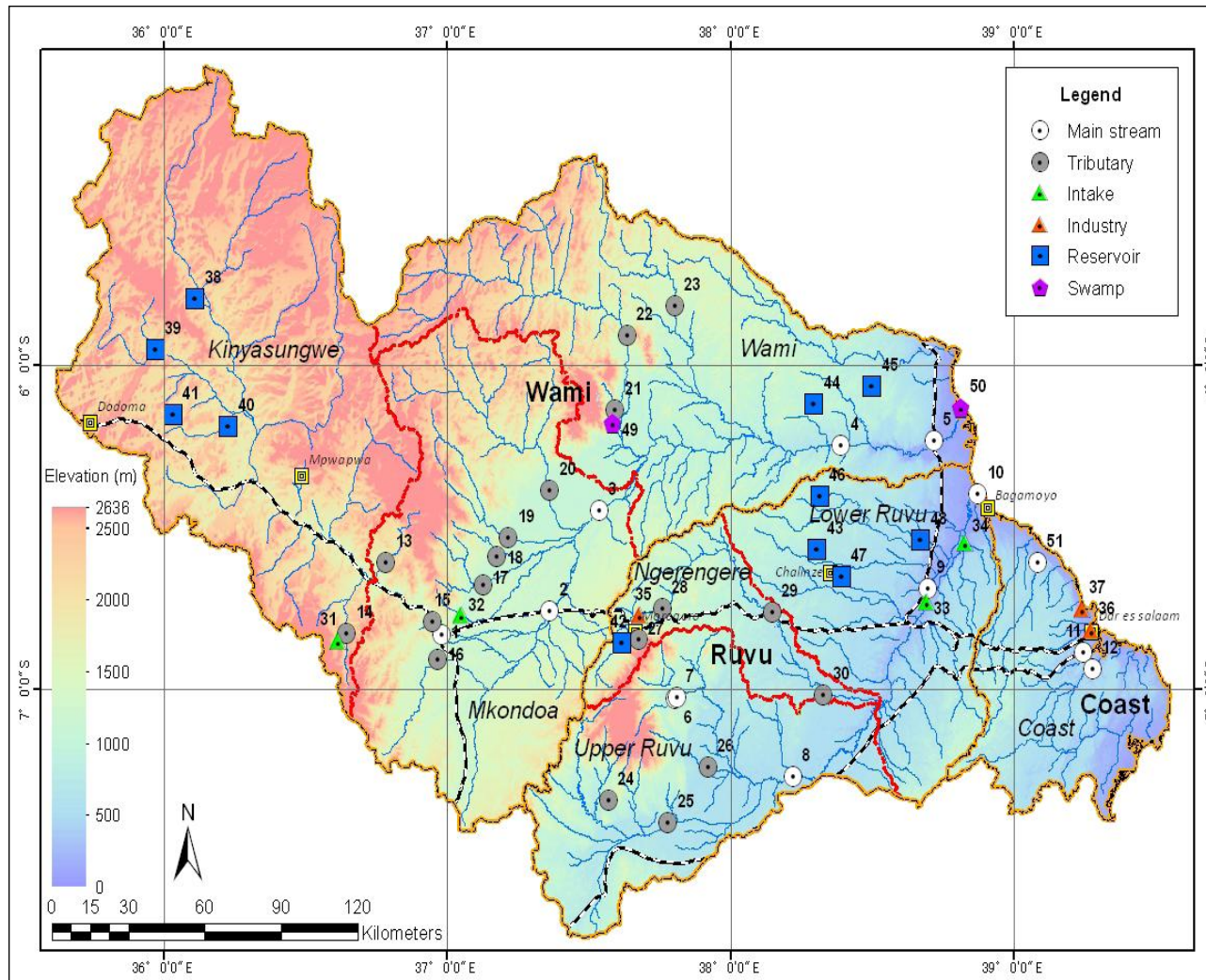
WR monitoring stations.....



27 groundwater monitoring stations



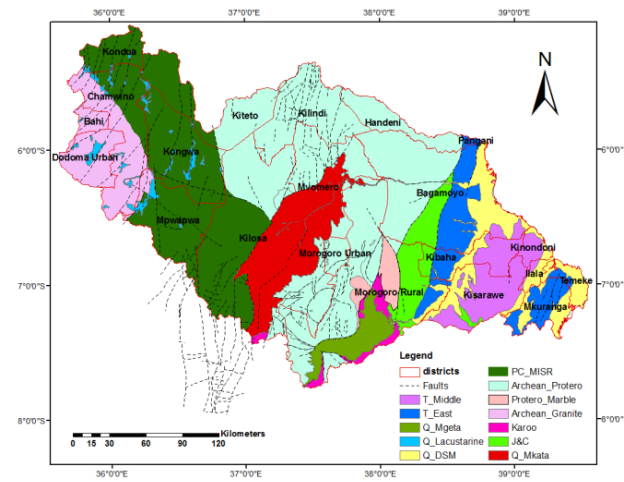
WR Monitoring stations.....



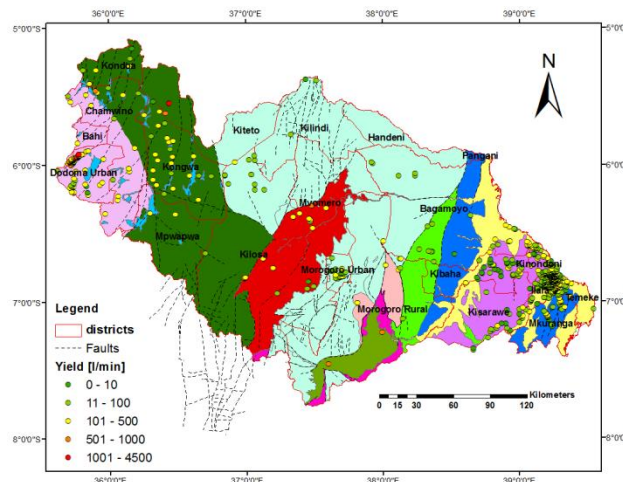
80 water quality monitoring stations

Groundwater Status

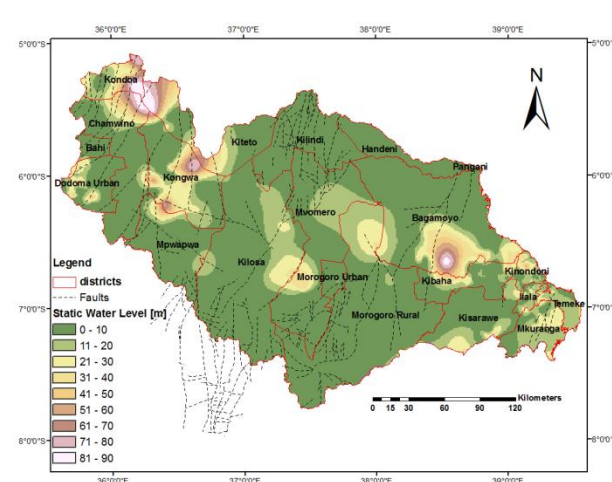
Aquifer Category



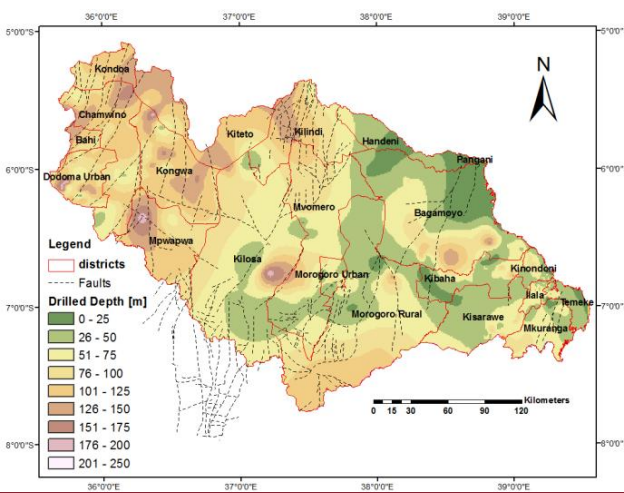
Yield [l/min]



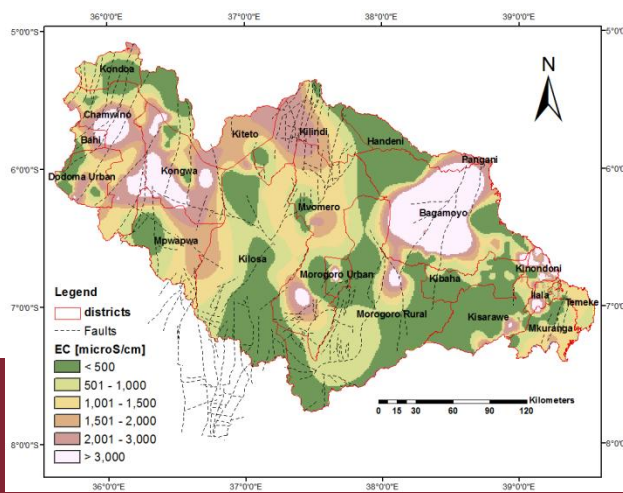
Static Water Level [m]



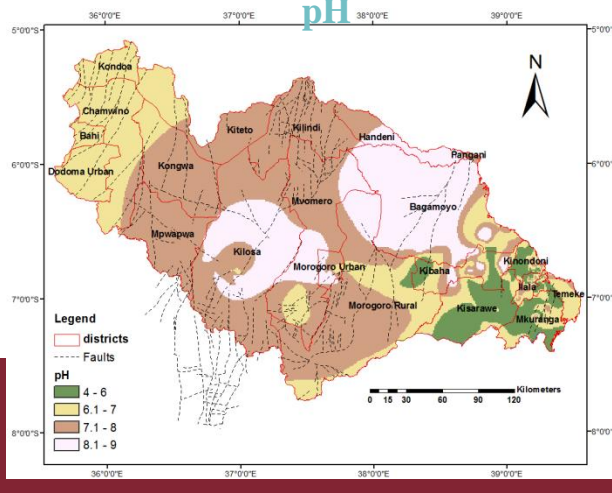
Drilled Depth [m]



EC [microS/cm]

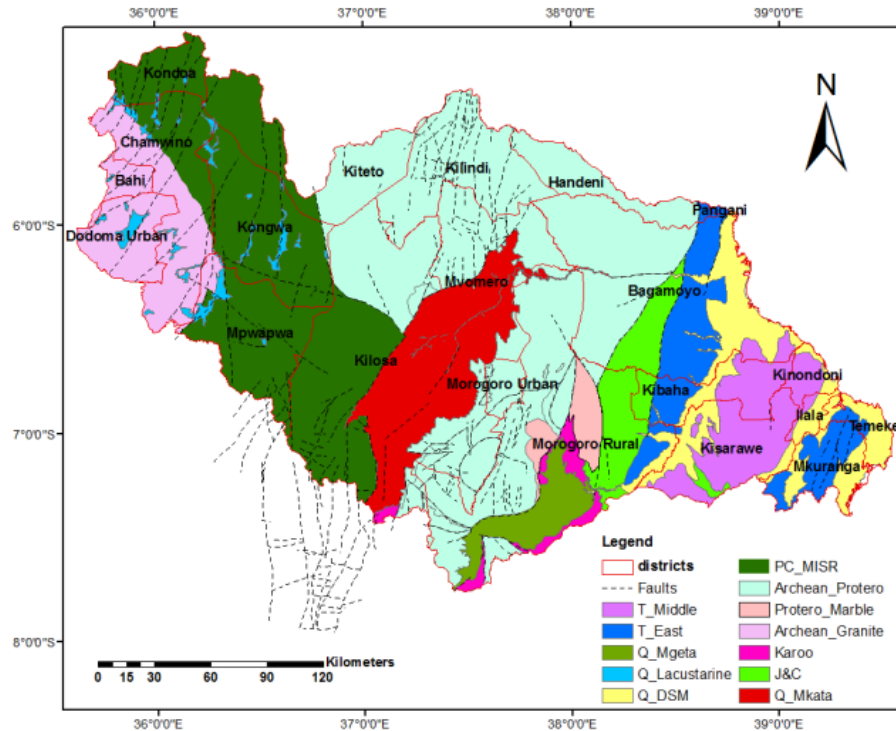


pH

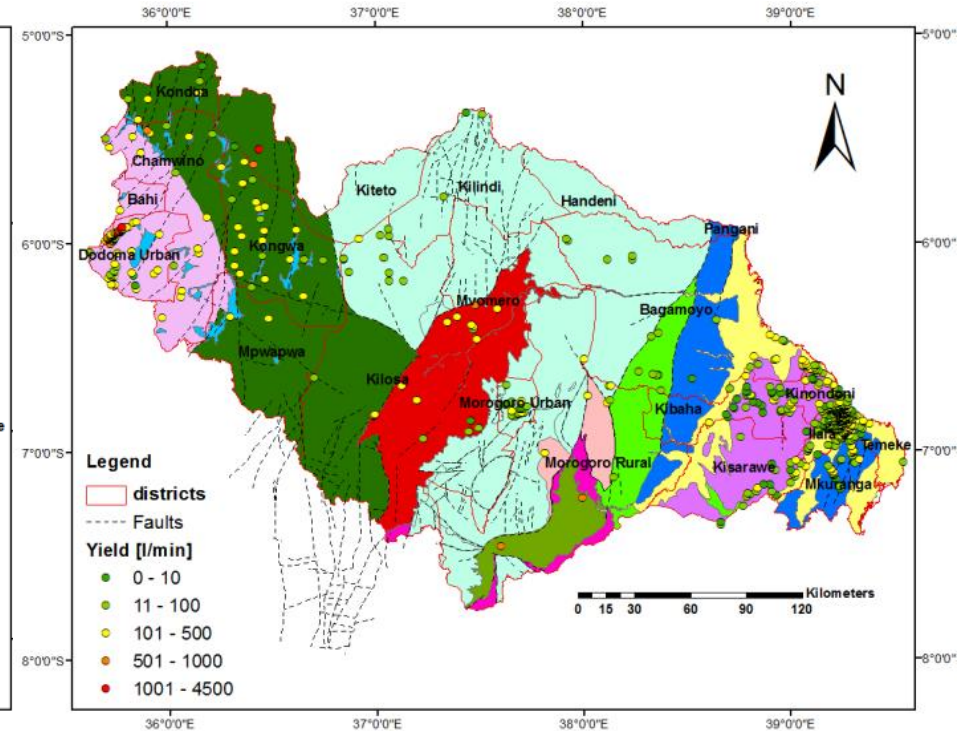


Groundwater Status.....

Aquifer Category



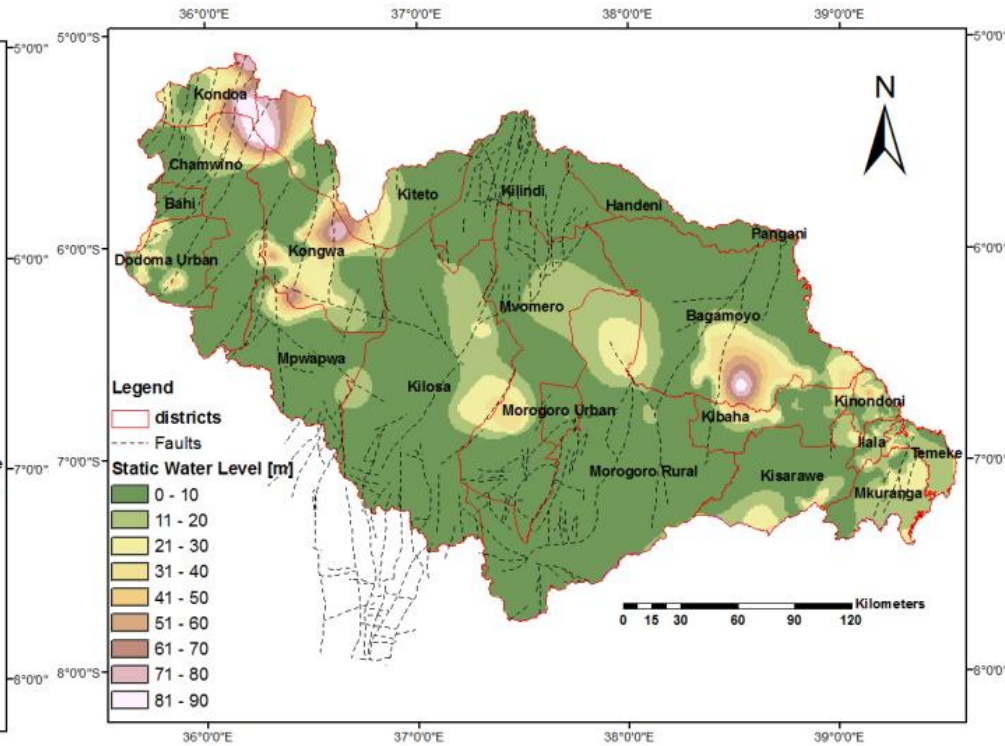
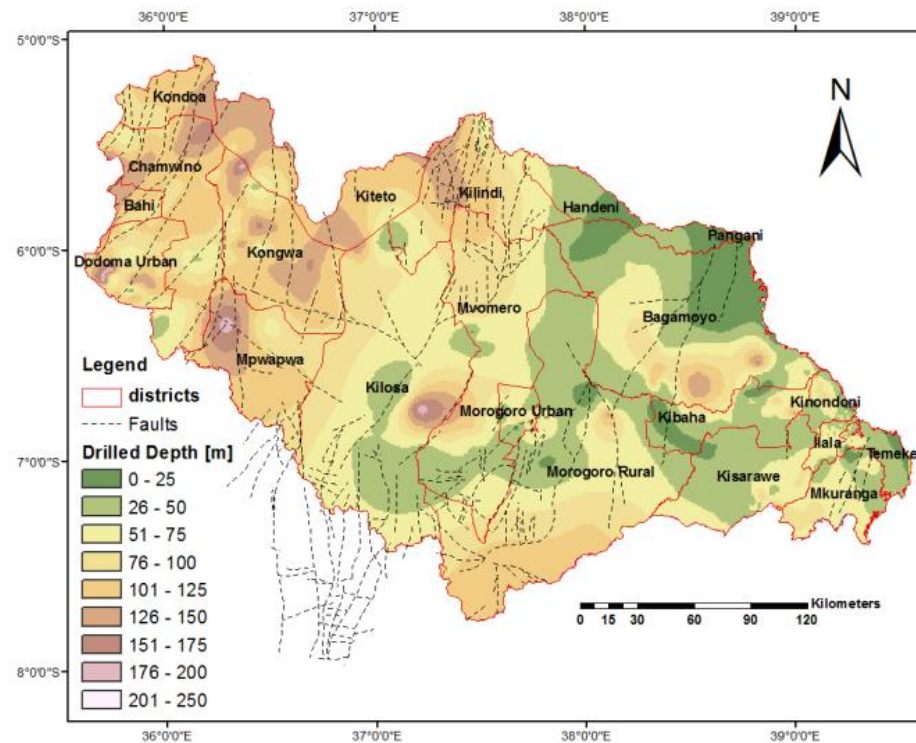
Yield [l/min]



Groundwater Status.....

Drilled Depth [m]

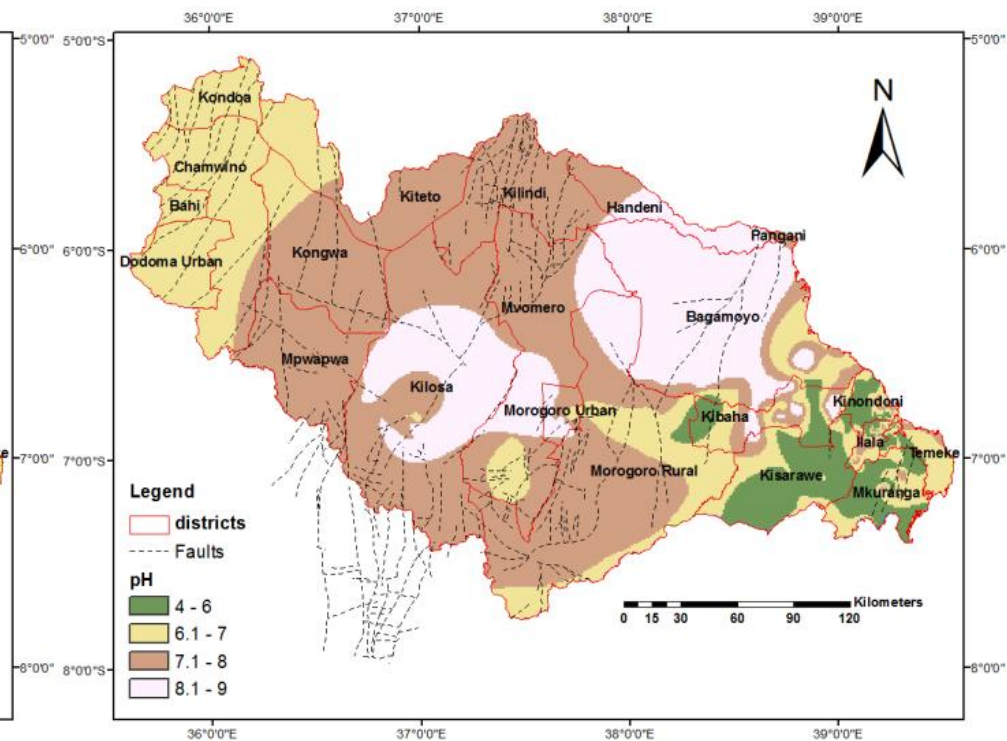
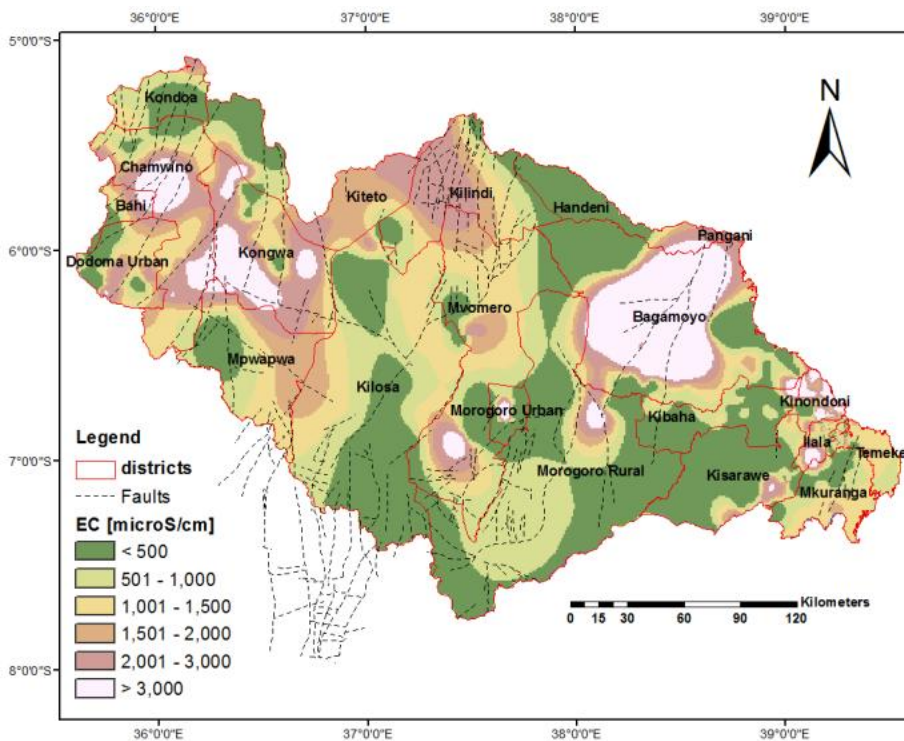
Static Water Level [m]



Groundwater Status.....

EC [microS/cm]

pH



Thank you for listening!

