



**ACC DAR**

Adapting to Climate Change in Coastal Dar es Salaam

International Workshop in the *Urban Studies* Journal Seminar Series

**Bearing the brunt of environmental change: understanding climate adaptation and transformation challenges in African cities**

**Royal Holloway, University of London, 16 -17 April 2013**



**SAPIENZA**  
UNIVERSITÀ DI ROMA



**EXPLORING COPING STRATEGIES FOR SUPPORTING  
AUTONOMOUS ADAPTIVE CAPACITY IN DAR ES SALAAM**

**London, 16 April 2013**

**Liana Ricci**

**Department of Civil Engineering, Building and Environment (DICEA)**

**[liana.ricci@uniroma1.it](mailto:liana.ricci@uniroma1.it)**

## Setting the Scene

- Facing the coupled effects of GEC and fast growing cities



Dar Es Salaam,  
Bagamoyo Road,  
2011

## Setting the Scene

- Facing the coupled effects of GEC and fast growing cities
- **What vulnerabilities? Dealing with uncertainties in:**
  - Climatic changes and variability
  - City changes and development
  - Financial resources
- **Supporting autonomous adaptive capacity as an effective strategy to reduce vulnerability**

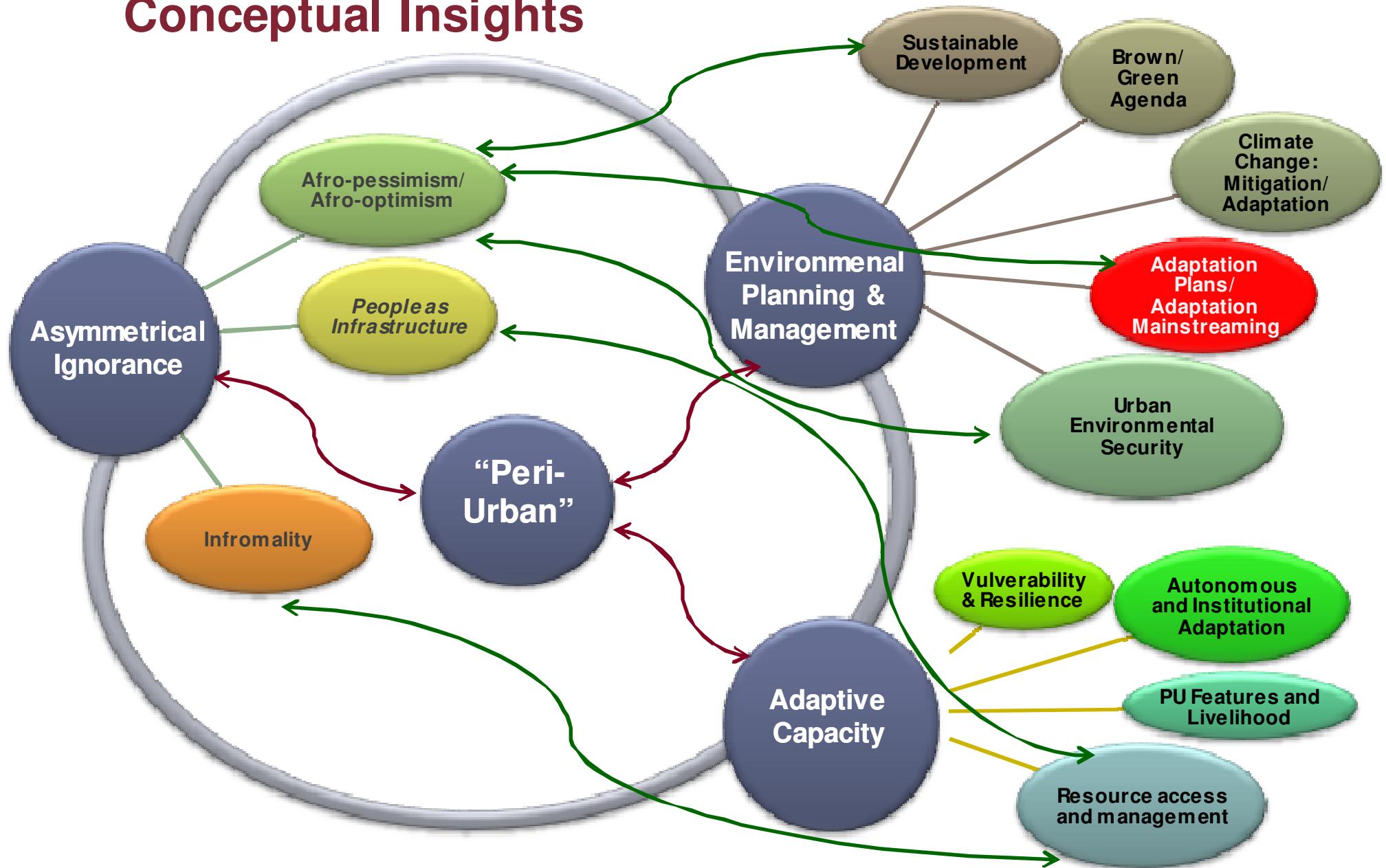
Dar Es Salam,  
Bagamoyo Road,  
2011

# Guiding Questions

- Why support “autonomous” adaptation strategies?
- How support “autonomous” adaptation strategies?
  - Understanding the drivers of autonomous adaptation strategies
  - Understanding how LGAs can monitor and support these strategies
  - Understanding how identifying entry points to support autonomous adaptation strategies

# Why Support Autonomous Adaptation Strategies?

## Conceptual Insights



# How Support Autonomous Adaptation Strategies?

## Understanding the driver of autonomous adaptation strategies

**Interacting dynamics of livelihood, institutional activities, rural-urban interplay and environmental change** offer both opportunities and challenges for enhancing peoples adaptive capacity.

- **Contextual** Vulnerabilities VS **Inherent** Vulnerability
- Autonomous Adaptive capacity as function of residents' characteristics and livelihoods , environmental features and spatial location

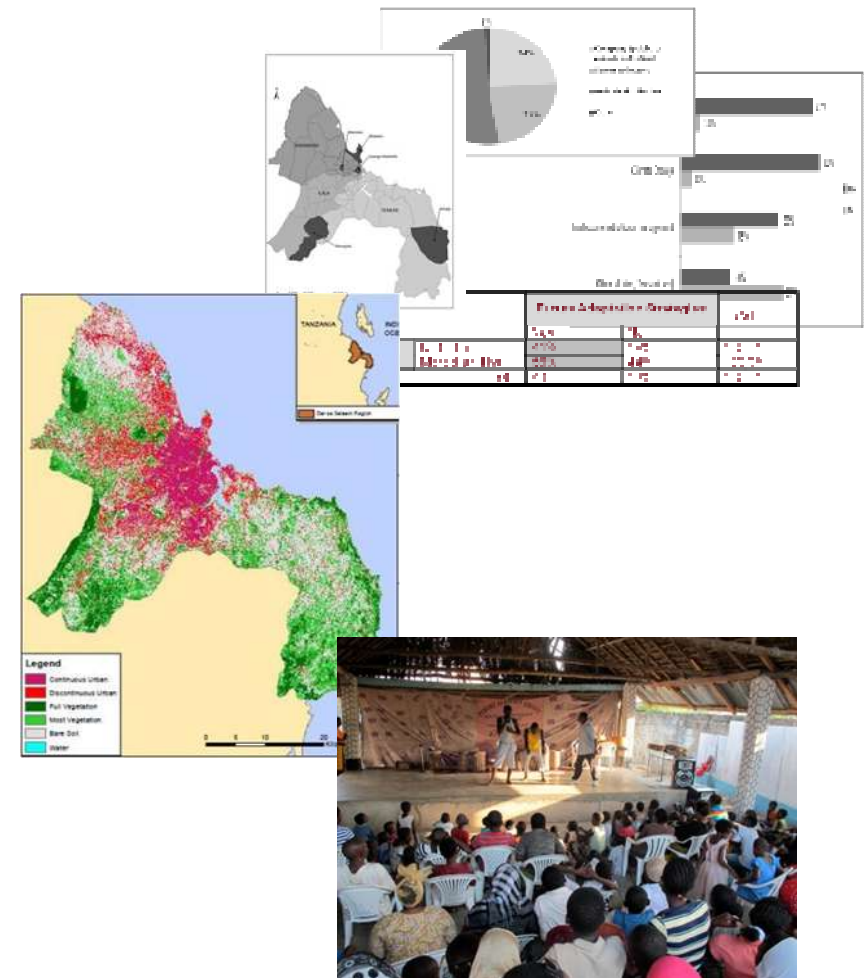




# How Support Autonomous Adaptation Strategies?

## Understanding the driver of autonomous adaptation strategies

- Exploring coping strategies
  - Data source 6000 household questionnaire in PU Dar es Salaam
  - Land Cover Classification
  - Environmental features and characteristics
  - Participatory Forum Theatre



# How Support Autonomous Adaptation Strategies?

## Understanding the driver of autonomous adaptation strategies

### Current Adaptation Strategies

- Changes in livelihood strategies
- Changes in modalities of accessing resources
- Changes in environment (e.g. river embankment, house/land)
- Move to another area
- Change type of livelihood strategies

*Diversifying sources of livelihood*



Agriculture



Agriculture

+



Street shop

+



Collecting and selling recycled material



# How Support Autonomous Adaptation Strategies?

## Understanding the driver of autonomous adaptation strategies

### Current Adaptation Strategies

- Changes in livelihood strategies
- Changes in modalities of accessing resources
- Changes in environment (e.g. river embankment, house/land)
- Move to another area
- Change type of livelihood strategies

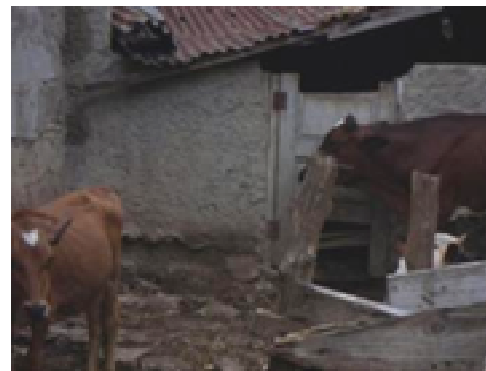
*Change in crops or livestock*



Rice



Cassava



Cow s



Chicken

# How Support Autonomous Adaptation Strategies?

## Understanding the driver of autonomous adaptation strategies

### Current Adaptation Strategies

- Changes in livelihood strategies
- **Changes in modalities of accessing resources**
- Changes in environment (e.g. river embankment, house/land)
- Move to another area
- Change type of livelihood strategies



Shallow pit



# How Support Autonomous Adaptation Strategies?

## Understanding the driver of autonomous adaptation strategies

### Current Adaptation Strategies

- Changes in livelihood strategies
- Changes in modalities of accessing resources
- **Changes in environment (e.g. river embankment, house/land)**
- Move to another area
- Change type of livelihood strategies



# How Support Autonomous Adaptation Strategies?

## Understanding the driver of autonomous adaptation strategies

### Current Adaptation Strategies

- Changes in livelihood strategies
- Changes in modalities of accessing resources
- **Changes in environment (e.g. river embankment, house/land)**
- Move to another area
- Change type of livelihood strategies



# How Support Autonomous Adaptation Strategies?

## Understanding the driver of autonomous adaptation strategies

### Current Adaptation Strategies

- Changes in livelihood strategies
- Changes in modalities of accessing resources
- Changes in environment (e.g. river embankment, house/land)
- **Move to another area**
- Change type of livelihood strategies (e.g. switch to different income generating activity)





# How Support Autonomous Adaptation Strategies?

## Understanding the driver of autonomous adaptation strategies

### Current Adaptation Strategies

- Changes in livelihood strategies
- Changes in modalities of accessing resources
- Changes in environment (e.g. river embankment, house/land)
- Move to another area
- **Change type of livelihood strategies (e.g. switch to different income generating activity)**



Fishing

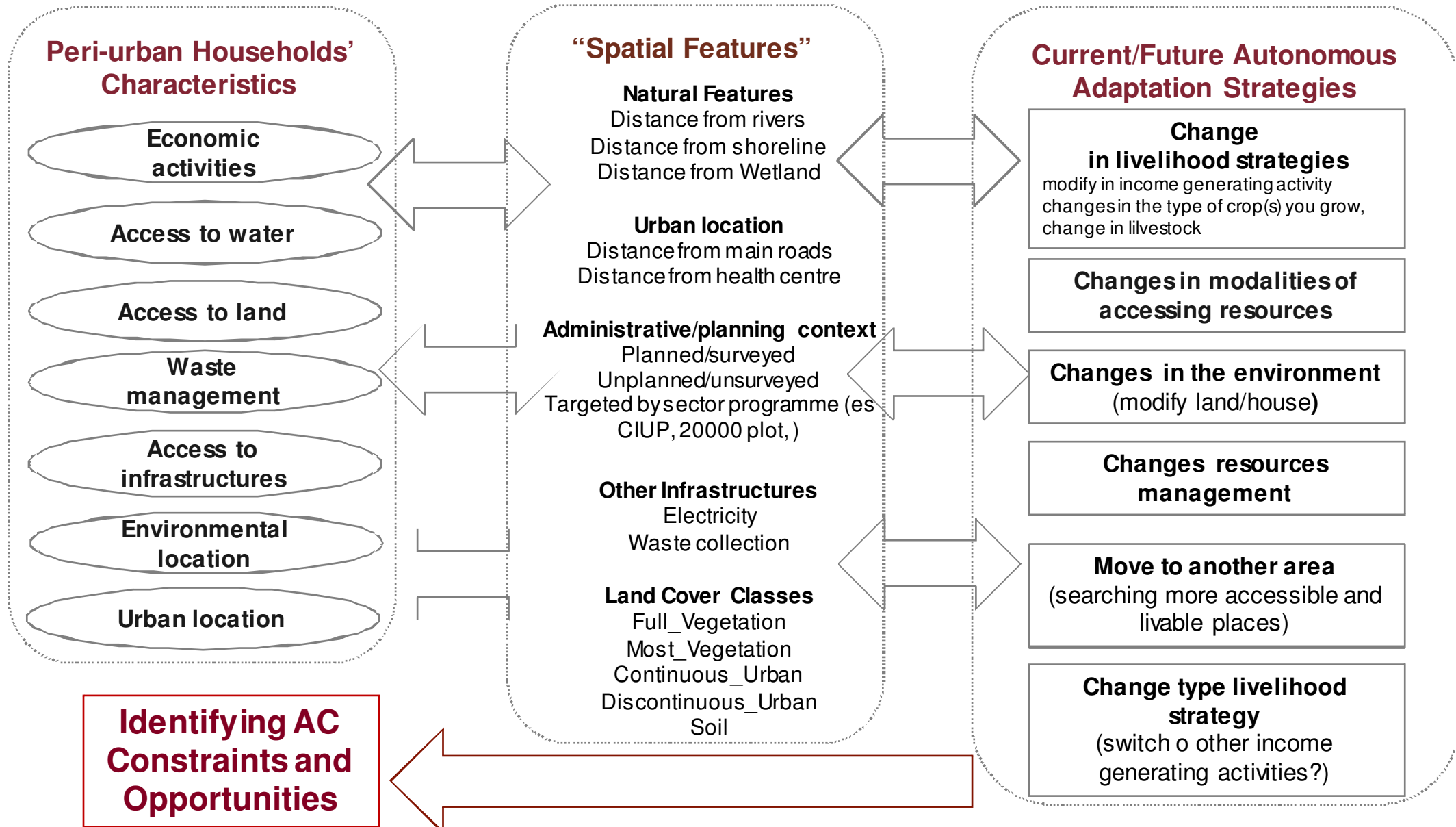


Small shop business



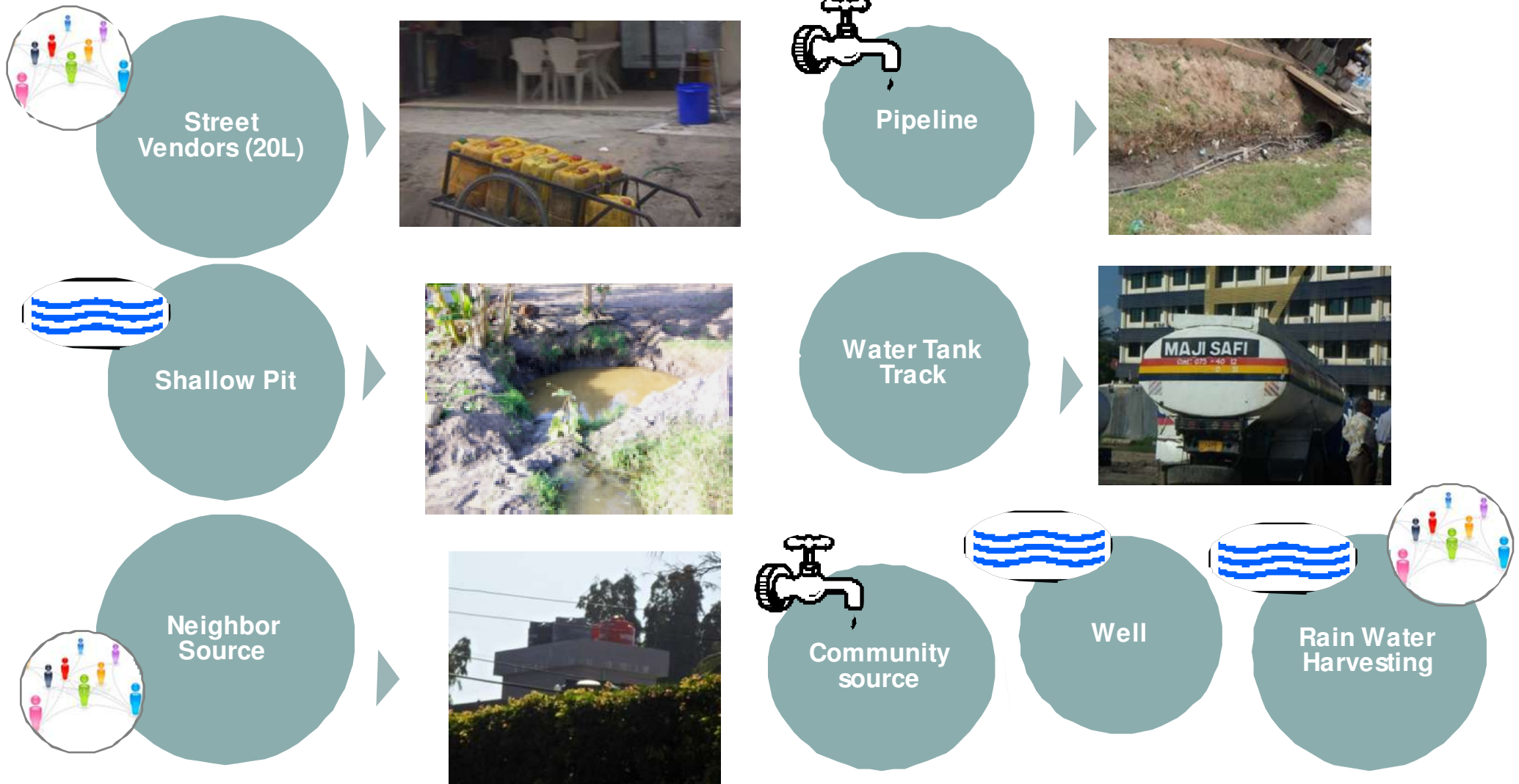
# How Support Autonomous Adaptation Strategies?

## Understanding how LGAs can monitor and support these strategies

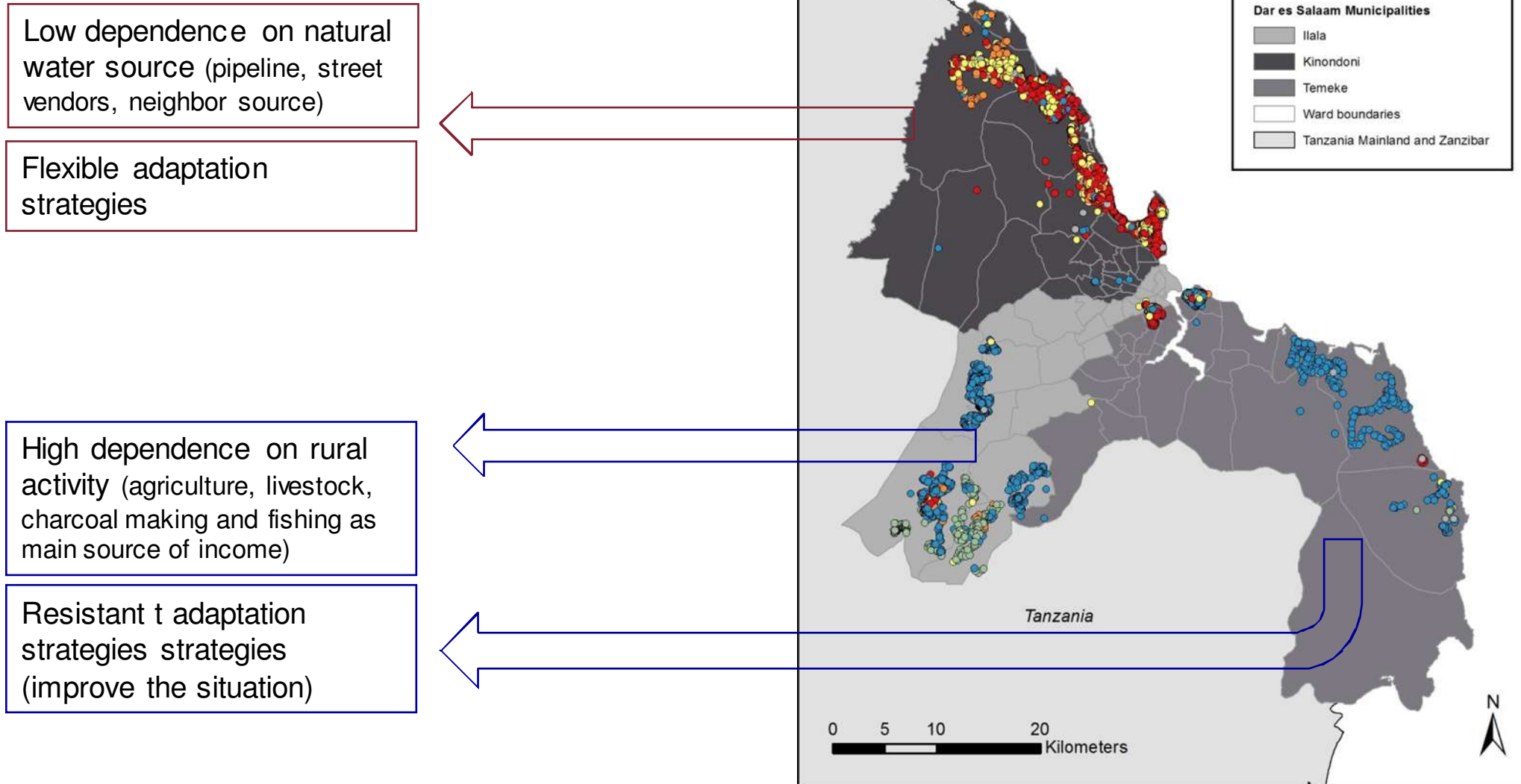


# How Support Autonomous Adaptation Strategies?

## Understanding the driver of autonomous adaptation strategies

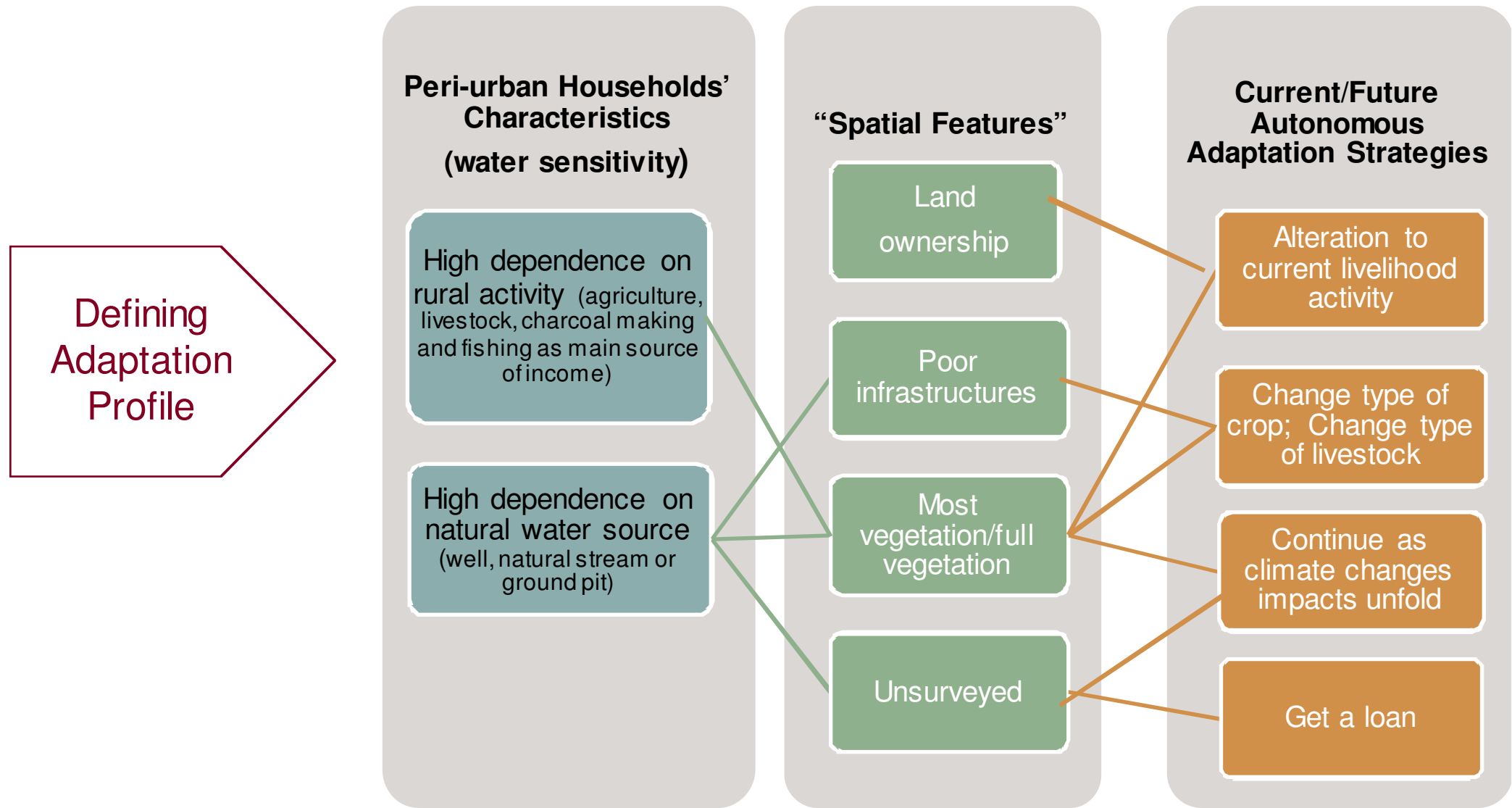


# Sensitivity



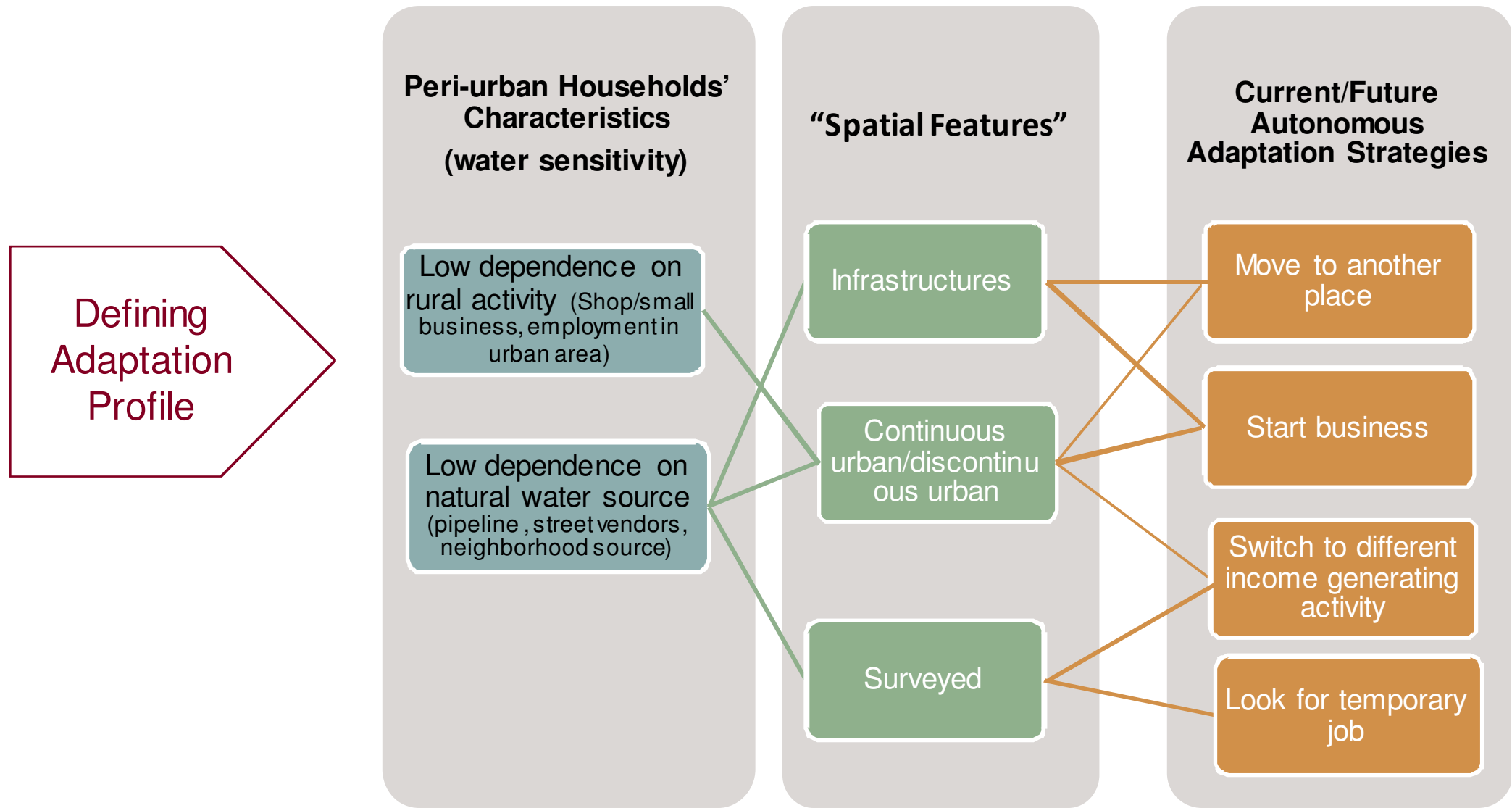
# How Support Autonomous Adaptation Strategies?

## Understanding how LGAs can monitor and support these strategies

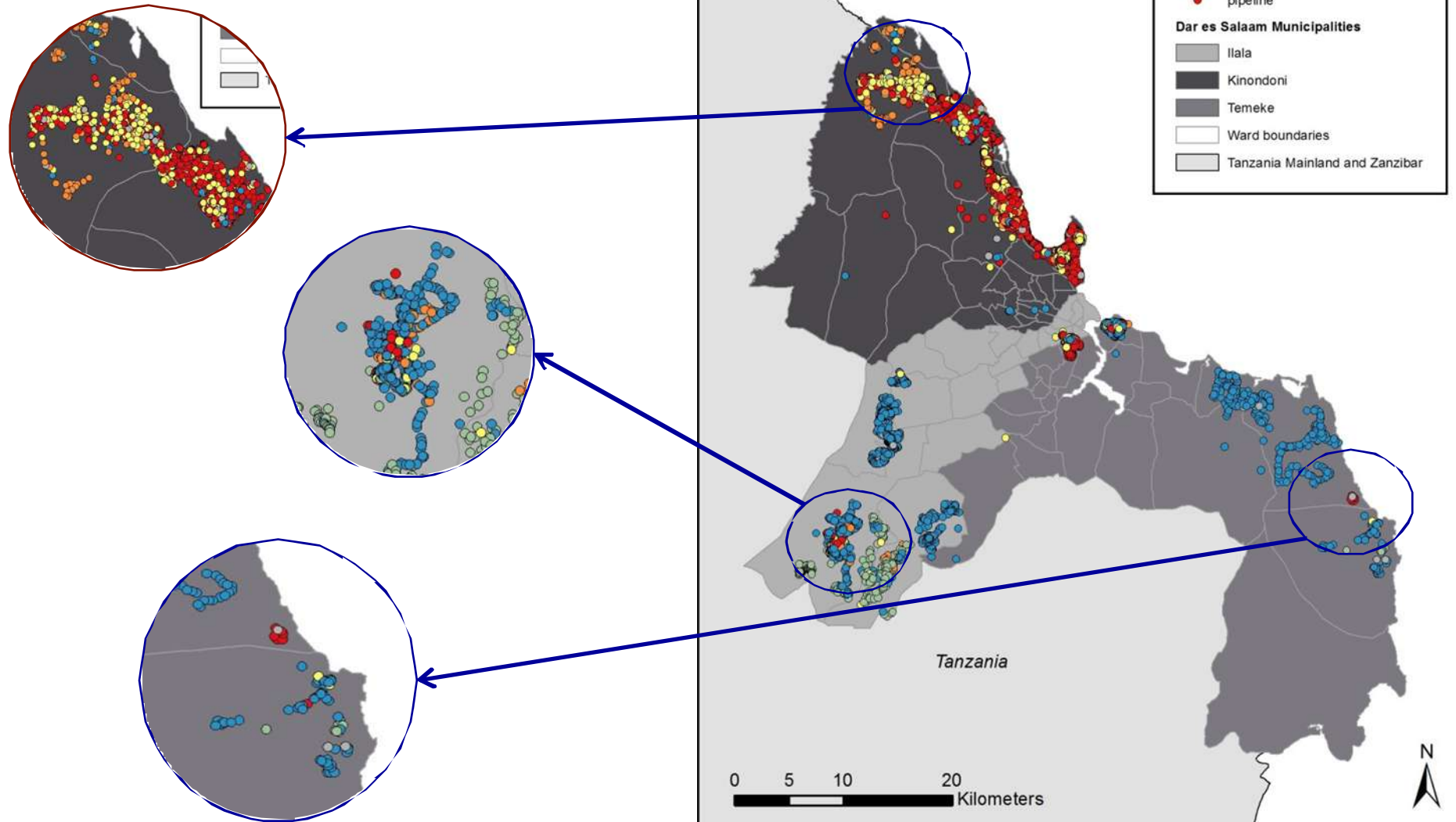


# How Support Autonomous Adaptation Strategies?

## Understanding how LGAs can monitor and support these strategies



# Site-Specific Sensitivity





# The Way Forward

## How identifying entry points to support autonomous adaptation

What are the drivers of adaptation profiles?

- Expression of people agency VS Self- exploitation

Faceable investigation tools:

- Forum Theatre: adaptation options and obstacles, power relations, opportunities, resources to overcome the challenges

# The Way Forward

## How identifying entry points to support autonomous adaptation



## Concluding Remarks

- High Adaptive Capacity; how and when to “support” it?
- Livelihood, adaptive capacity and modalities of accessing resource are deeply anchored to the place: green infrastructures might exacerbate the impact of GEC, increasing vulnerabilities rather than reducing them
- How can planning take these interdependencies into consideration?
- How to bridge the distance between planning and practices?



# Thank you

Sapienza University of Rome  
DICEA - Department of Civil, Building and Environmental Engineering  
<http://www.dicea.uniroma1.it/>

Liana Ricci  
[liana.ricci@uniroma1.it](mailto:liana.ricci@uniroma1.it)

Adapting to Climate Change in Coastal Dar es Salaam  
[www.planning4adaptation.eu/](http://www.planning4adaptation.eu/)